

THE SIENA HOTEL

General Information – Private Rooms

Rooms Capacity

Lombardi

Banquet	36 people
Reception	60 people
U-Shape	25 people
Classroom	25 people
Hollow Square	18 people
Conference	20 people
Theater	40 people

Tuscany

Banquet	72 people
Reception	100 people
U-Shape	30 people
Classroom	50 people
Hollow Square	35 people
Conference	25 people
Theater	100 people

Ballroom (Tuscany + Lombardi)

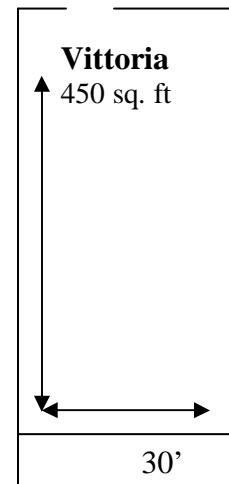
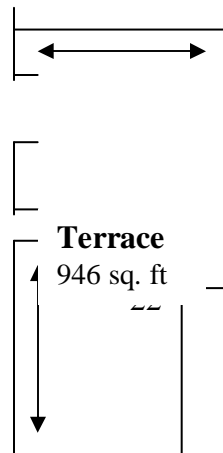
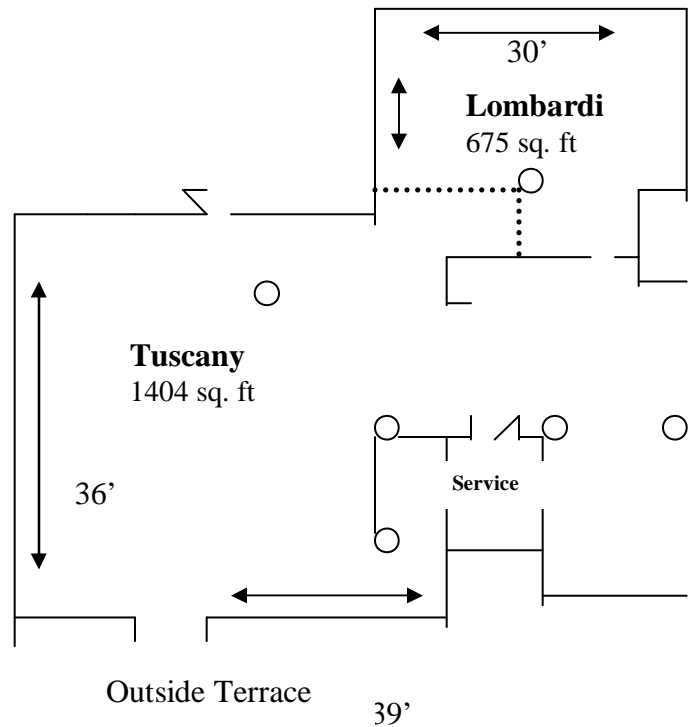
Banquet	108 people
Reception	200 people

Terrace

Banquet	36 people
Conference	20 people

Vittoria (conference style only)

Conference	14 people
------------	-----------



43'

15'

Directions to The Siena Hotel
1505 East Franklin St., Chapel Hill, NC 27514
Tel 919-929-4000

From: RDU Airport and I-40 Westbound

Take I-40 Westbound towards Chapel Hill.
Take exit #270(Hwy. 15-501) to the right.
At the end of the exit ramp turn left onto Hwy. 15-501 South.
Travel through 5 traffic lights.
Stay in the right lane and merge right onto Franklin St.
Travel through 2 traffic lights, and the Siena Hotel will be on the right just after the Sherwin Williams paint store sign.

From: I-85 Northbound

Follow I-85 north to the I-40 east towards Raleigh.
Take the I-40 east exit to the right.
Travel on I-40 east for approx. 7 miles.
Take the Hwy. 15-501 exit to the right.
At the end of the exit ramp turn right onto 15-501 south.
Travel through 4 traffic lights.
Stay in the right lane and exit off onto Franklin Street
Travel through 2 traffic lights, and the Siena Hotel will be on the right just past after the Sherwin Williams paint store sign.

From: I-40 Eastbound

Take I-40 east towards Chapel Hill.
Take the Hwy. 15-501 exit to the right.
At the end of the exit ramp turn right onto 15-501 south.
Travel through 4 traffic lights.
Stay in the right lane and exit off onto Franklin Street.
Travel through 2 traffic lights, and the Siena hotel will be on the right just after the Sherwin Williams paint store sign.

From: I-85 Southbound

In Durham take the 15-501 south exit to the left.
Follow 15-501 into Chapel Hill.
After crossing over I-40(entering the City Limits), travel through 5 traffic lights.
Stay in the right lane and exit off onto Franklin Street.
Travel through 2 traffic lights, and the Siena hotel will be on the right just after the Sherwin Williams paint store sign.

For further information, please visit our website at www.sienahotel.com